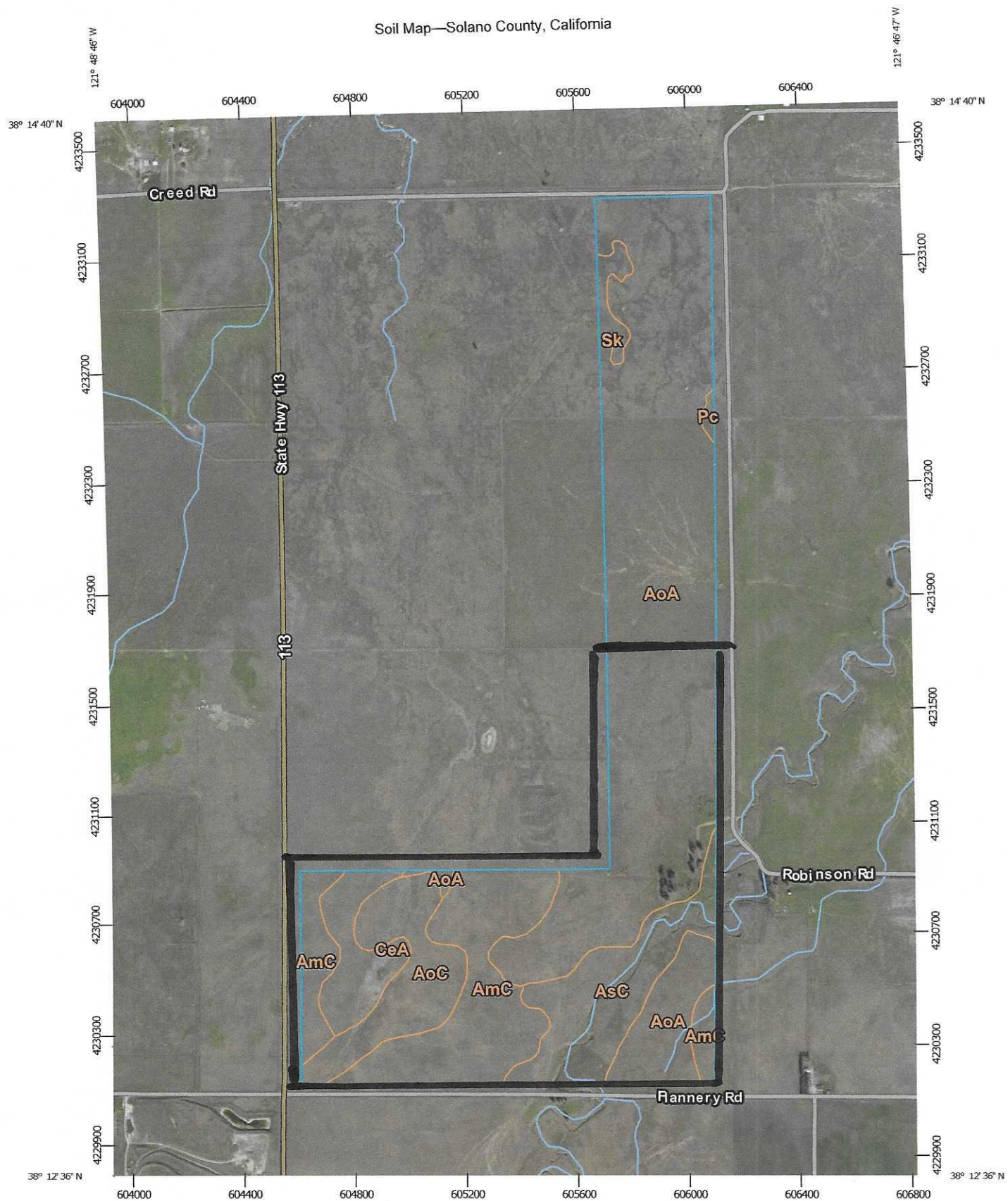


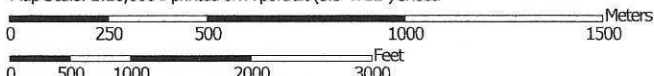
## Map Unit Legend

Solano County, California (CA095)			
Map Unit Symbol	Map Unit Name	Acres in AOI	Percent of AOI
AmC	Altamont-Diablo clays, 2 to 9 percent slopes	93.2	17.7%
AoA	Antioch-San Ysidro complex, 0 to 2 percent slopes	299.7	57.0%
AoC	Antioch-San Ysidro complex, 2 to 9 percent slopes	44.7	8.5%
AsC	Antioch-San Ysidro complex, thick surface, 2 to 9 percent slopes	54.2	10.3%
CeA	Clear Lake clay, 0 to 2 percent slopes, MLRA 17	25.9	4.9%
Pc	Pescadero clay loam	1.4	0.3%
Sk	Solano-Pescadero complex	7.1	1.4%
<b>Totals for Area of Interest</b>		<b>526.3</b>	<b>100.0%</b>

Soil Map—Solano County, California



Map Scale: 1:18,600 if printed on A portrait (8.5" x 11") sheet.



Map projection: Web Mercator Corner coordinates: WGS84 Edge ticks: UTM Zone 10N WGS84





Natural Resources  
Conservation Service

Web Soil Survey  
National Cooperative Soil Survey

6/8/2016  
Page 1 of 3

## MAP LEGEND

 Area of Interest (AOI)	 Spoil Area
 Area of Interest (AOI)	 Stony Spot
 Soils	 Very Stony Spot
 Soil Map Unit Polygons	 Wet Spot
 Soil Map Unit Lines	 Other
 Soil Map Unit Points	 Special Line Features
<b>Special Point Features</b>	<b>Water Features</b>
 Blowout	 Streams and Canals
 Borrow Pit	<b>Transportation</b>
 Clay Spot	 Rails
 Closed Depression	 Interstate Highways
 Gravel Pit	 US Routes
 Gravelly Spot	 Major Roads
 Landfill	 Local Roads
 Lava Flow	<b>Background</b>
 Marsh or swamp	 Aerial Photography
 Mine or Quarry	
 Miscellaneous Water	
 Perennial Water	
 Rock Outcrop	
 Saline Spot	
 Sandy Spot	
 Severely Eroded Spot	
 Sinkhole	
 Slide or Slip	
 Sodic Spot	

## MAP INFORMATION

The soil surveys that comprise your AOI were mapped at 1:24,000. Please rely on the bar scale on each map sheet for map measurements.

Source of Map: Natural Resources Conservation Service  
 Web Soil Survey URL: <http://websoilsurvey.nrcs.usda.gov>  
 Coordinate System: Web Mercator (EPSG:3857)

Maps from the Web Soil Survey are based on the Web Mercator projection, which preserves direction and shape but distorts distance and area. A projection that preserves area, such as the Albers equal-area conic projection, should be used if more accurate calculations of distance or area are required.

This product is generated from the USDA-NRCS certified data as of the version date(s) listed below.

Soil Survey Area: Solano County, California  
 Survey Area Data: Version 9, Sep 23, 2015

Soil map units are labeled (as space allows) for map scales 1:50,000 or larger.

Date(s) aerial images were photographed: Feb 2, 2012—Apr 29, 2012

The orthophoto or other base map on which the soil lines were compiled and digitized probably differs from the background imagery displayed on these maps. As a result, some minor shifting of map unit boundaries may be evident.